



UNIFORM PROGRAM



Index

Pages 2-11	Food & Nutrition Services
Pages 12-19	Nurses
Pages 20-25	C.N.A.
Pages 26-28	Maintenance
Pages 29-31	Housekeeping and Floor Care
Pages 32-39	Rehab



Food and Nutrition Services - The New Look



Your New Professional Look!

We are all wonderfully and uniquely different. Multiple style options were designed for the NHC program to insure that everyone will be able to select the styles that work best with your body shape. In your job, you need to select a size that allows you the most movement with your work motions. Loose fitting garments will work best. Remember, these garments are not vanity sizing! The only person who knows the size on the label is the partner ordering your uniform and you. When selecting your sizes, please allow for slight shrinkage.

Before You Wash Your Garments

PLEASE TRY ON YOUR UNIFORMS BEFORE WASHING THEM. If garments do not fit please refer to the Order Form or the Style Information Form for the Return Policy. To guarantee you get the most wear out of your uniforms remember to look at the care instructions in the label of each garment. Turn them inside out and wash per instructions.



Food and Nutrition Services - The New Look



Your New Professional Look!

We are all wonderfully and uniquely different. Multiple style options were designed for the NHC program to insure that everyone will be able to select the styles that work best with your body shape. In your job, you need to select a size that allows you the most movement with your work motions. Loose fitting garments will work best. Remember, these garments are not vanity sizing! The only person who knows the size on the label is the partner ordering your uniform and you. When selecting your sizes, please allow for slight shrinkage.

Before You Wash Your Garments

PLEASE TRY ON YOUR UNIFORMS BEFORE WASHING THEM.
If garments do not fit please refer to the Order Form or the Style Information Form for the Return Policy. To guarantee you get the most wear out of your uniforms remember to look at the care instructions in the label of each garment. Turn them inside out and wash per instructions.



Food and Nutrition Services - Chef Coats



NHC4308-TRGRP
Women's Graphite Short Sleeve Chef Coat with Graphite Contrast Trim on Collar, Placket and Sleeves. Name Badge Holder. Sleeve Pocket. 65% Poly/35% Cotton Brushed Poplin.



NHC4309-TRGRP
Men's Graphite Short Sleeve Chef Coat with Graphite Contrast Trim on Collar, Placket and Sleeves. Name Badge Holder. Sleeve Pocket. 65% Poly/35% Cotton Brushed Poplin.



NHC4455-CW78
Chefwear Unisex Red Short Sleeve Twill Chef Coat. Ten Plastic Buttons. Left Chest Pocket. Left Sleeve Pocket. No Side Vents. 7.5 oz. 65% Cotton/35% Poly.



NHC4410-CW78
Chefwear Unisex Red Long Sleeve Twill Chef Coat. Ten Plastic Buttons. Left Chest Pocket. Left Sleeve Pocket. No Side Vents. 7.5 oz. 65% Cotton/35% Poly.



NHC5690-CWP6
Chefwear Unisex Black Long Sleeve Chef Coat with Red Piping. Left Chest Pocket and Sleeve Pocket, Rounded French Cuffs. Best Style Coordination is with Charcoal Pant NHC3500-CW32. 7.0 oz. 60% Cotton/40% Poly.



Food and Nutrition Services - Shirts



NHC4480-CW30
Chefwear Women's Black Boyfriend Shirt. Elbow Length, Fold Back Sleeve. Mandarin Collar. 6.2 oz. 65% Poly/35% Cotton.



NHC4480-CW40
Chefwear Women's White Boyfriend Shirt. Elbow Length, Fold Back Sleeve. Mandarin Collar. 6.2 oz. 65% Poly/35% Cotton.



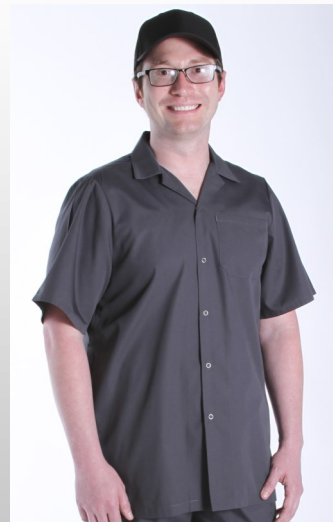
NHC1334-GRP
Women's Graphite Short Sleeve Shirt with Mesh Side Panels and Red Stitching. 6.0 oz. 65% Poly/35% Cotton Poplin.



NHC5604-GY
Women's Graphite Long Sleeve Compression Shirt. Moisture Wicking, Anti-microbial. 100% Poly. Style cannot be worn by itself.



NHC1333-GRP
Men's Graphite Short Sleeve Shirt with Mesh Side Panels and Red Stitching. 6.0 oz. 65% Poly/35% Cotton Poplin.



NHC1371-CW105
Chefwear Unisex Graphite Ring Snap Shirt. Left Chest Pocket. Side Vents. 4.25 oz. 65% Poly/35% Cotton Poplin.



NHC5104-GY
Landau Men's Graphite Long Sleeve Compression Shirt. Moisture Wicking. Anti-microbial. 100% Poly. Style cannot be worn by itself.



Food and Nutrition Services - Women's Pants & Skirt



NHC8327-GRP

Landau Women's Graphite Classic Relaxed Fit Full Elastic Pant. 2" Elastic, Two Slash Pockets. Straight Leg. 65% Poly/35% Cotton.



NHC8335-GRP

Landau Women's Graphite Cargo Pant. Drawstring Front, Back Elastic, Slight Flare Leg with Side Vents. Four Thigh Pockets. 65% Poly/35% Cotton.



83221-GRAPH

Scrub Zone Women's Graphite Relaxed Fit Cargo Pant. Elastic Waist, Two Thigh Pockets. Straight Leg. 65% Poly/35% Cotton.



NHC3500-CW32

Chefwear Unisex Charcoal 2" Elastic Waist Chef Pant. Two Deep Front Pockets. Two Back Pockets. Straight Leg. 6.0 oz. 100% Cotton



7602-GRP

Landau Unisex Graphite Reversible Pant with Drawstring. One Back Pocket. Straight Leg. Maternity Pant Option. 65% Poly/35% Cotton.



NHC2226-GRP

Landau Women's Graphite Elastic Waist A-Line Skirt. Two Slash Pockets 29.5" Long. 65% Poly/35% Cotton.



Food and Nutrition Services - Men's Pants



NHC3500-CW32
Chefwear Unisex Charcoal 2'' Elastic Waist Chef Pant. Inside Drawstring. Two Deep Front Pockets. Two Back Pockets. Straight Leg. 6.0 oz. 100% Cotton Twill.



7602-GRP
Landau Unisex Graphite Reversible Pant with Drawstring. One Back Pocket. Straight Leg. 65% Poly/35% Cotton.



2026-GRRPS
Landau Men's Graphite Lightweight Stretch Ripstop Cargo Pant. Hidden Drawstring, Elastic Back, Snap Closure, Belt Loops, Zipper-fly, Angled Knee Darts, Two Hip Pockets, One Vertical Side-seam Thigh Pocket. Horizontal Thigh Pocket and Two Back Pockets. Straight Leg. Runs big, may need to order one size smaller than normal. 84% Cotton/13% Poly/3% Spandex.



8555-GRP
Landau Men's Graphite Elastic Waist Cargo Pant with Zipper Fly. Hidden Drawstring, Two Slash Pockets, Four Thigh Pockets, Two Back Pockets. Straight Leg. 65% Poly/35% Cotton.



85221-GRAPH
Scrub Zone Men's Graphite Drawstring Cargo Pant. One Thigh Pocket, One Back Pocket. 65% Poly/35% Cotton.



Food and Nutrition - Rain Jacket/Waist Aprons/Bistro Aprons



NHC1000-YL

Unisex Yellow Taffeta Hooded Rain Jacket in a Pouch. Two Slash Pockets. Zipper Opening. Elastic Cuffs. 100% Nylon. Can be used to go outside when raining for trash removal.



0247-BKKT

Three Pocket Black Waist Apron . 15" Long. 7.5 oz. 65% Poly/35% Cotton Twill.



0247-RCT

Three Pocket Red Waist Apron . 15" Long. 7.5 oz. 65% Poly/35% Cotton Twill. Coordinates with Red Lightweight Poplin Chef Coats NHC4308 and NHC4309.



0253-BKKT

One Pocket Black Bistro Apron. 30" Long. 7.5 oz. 65% Poly/35% Cotton Twill.



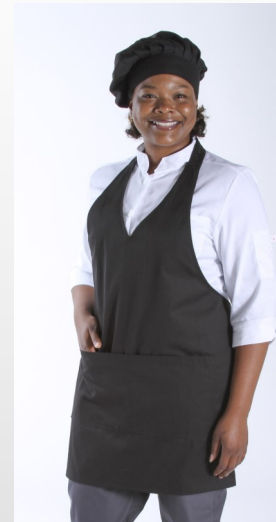
Food and Nutrition Services - Bib Aprons With Pockets



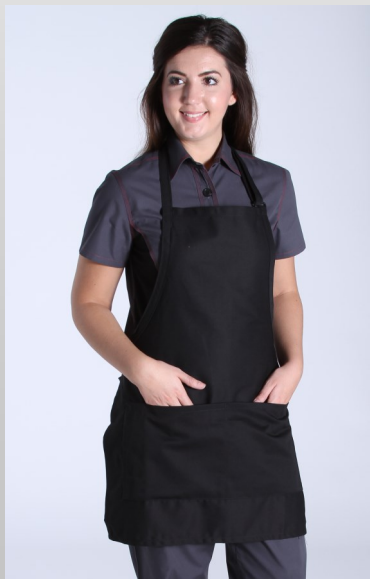
NHC1650-CW06
Chefwear "Utensils"
One Pocket Bib Apron.
38"W x 35" L. 6.0 oz.
100% Cotton



NHC1650-CW30
Chefwear Black One
Pocket Bib Apron.
38"W x 35" L. 6.0 oz.
100% Cotton.



0263-BKKT
Black Two Pocket V-neck Bib
Apron with Neck Adjustment.
24" W x 28" L.
65% Poly/35% Cotton Poplin.



0248-BKKT
Two Pocket Black Bib
Apron. 24" W x 28" L.
7.5 oz.,
65% Poly/35% Cotton
Twill.



0248-RCT
Two Pocket Red Bib Apron.
24" W x 28" L. 7.5 oz.,
65% Poly/35% Cotton
Twill. Coordinates with Red
Lightweight Poplin Chef
Coats NHC4308 and
NHC4309.

0248-WWT
Two Pocket White Bib
Apron. 24" W x 28" L.
7.5 oz., 65% Poly/35%
Cotton Twill.





Food and Nutrition Services - Aprons Without Pockets



iDF66L-BK
No Pocket Black Water
Resistant Nylon Bib Apron
for Dishwashing.
34" L x 26" W



NHC1666-CW30
Chefwear No Pocket Black Bib
Apron. 39"W x 33" L. 7.5 oz.
65% Poly/35% Cotton Twill.



NHC1666-CW78
Chefwear No Pocket Red Bib
Apron. 39"W x 33" L. 7.5 oz.
65% Poly/35% Cotton Twill.
Coordinates with Red Twill
Chef Coats NHC4455 and
NHC4410.



NHC1666-CW40
Chefwear No Pocket White Bib
Apron. 39"W x 33" L. 7.5 oz.
65% Poly/35% Cotton Twill.



Food and Nutrition Services - Headwear



CW1430-CW32
Chefwear Charcoal Skull Cap with Elastic Back. 6.0 oz., 100% Cotton.



CW1430-CW78
Chefwear Red Skull Cap with Elastic Back. 6.0 oz., 100% Cotton. Coordinates with Red Twill Chef Coats NHC4455 and NHC4410.



NHC0212-BKP
Black Toque with Mesh Crown. Velcro Closure. 65% Poly/35% Cotton. Mesh-100% Poly.



NHC0213-BKAT
Black Skull Cap with Mesh Crown. Velcro Closure. 65% Poly/35% Cotton Twill. Mesh-100% Poly.



NHC7022-BKRD
Six Panel Black Ball Cap with Moisture Wicking. Red Color-blocking Inserts on Crown. Red Sandwich Bill. Velcro Closure. 100% Poly.



NHC7023-BK
Six Panel Black Ball Cap with Moisture Wicking. Velcro Closure. 100% Poly.



Food and Nutrition Services - Dietitian Lab Coats



3027-WWCH
Landau Women's White
Stretch Warm-Up Jacket with
Side Vents. Three Pockets.
52% Cotton/45% Poly/
3% Spandex.



3109-WWXY
Urbane Women's White
Zip Front Lab Coat.
Two Pockets.
65% Poly/ 35% Cotton.



9607-WWXY
Urbane Women's
White Button Front Lab
Coat. Four Pockets.
Stockinet Cuffs.
65% Poly/35% Cotton.



3124-WWVC
Landau Men's White
Four Button Lab Coat.
Five Pockets.
65% Poly/35% Cotton.



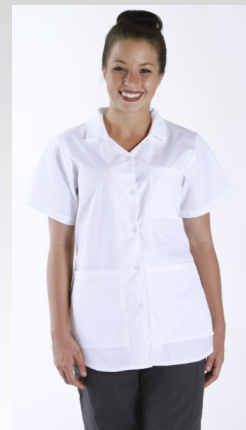
3148-WWY
Landau Men's White
Four Button Lab Coat
with Back Sewn Belt.
Three Pockets.
65% Poly/35% Cotton.



3174-WWXY
Landau Men's White
Four Button Notebook
Lab Coat with Back
Sewn Belt. Five Pockets.
65% Poly/35% Cotton.



Nurses-New Look Page



Your New Professional Look!

We are all wonderfully and uniquely different. Multiple style options were designed for the NHC program to insure that everyone will be able to select the styles that work best with your body shape. In your job, you need to select a size that allows you the most movement with your work motions. Loose fitting garments will work best. Remember, these garments are not vanity sizing! The only person who knows the size on the label is the partner ordering your uniform and you. When selecting your sizes, please allow for slight shrinkage.

Before You Wash Your Garments

PLEASE TRY ON YOUR UNIFORMS BEFORE WASHING THEM.

If garments do not fit please refer to the Order Form or the Style Information Form for the Return Policy. To guarantee you get the most wear out of your uniforms remember to look at the care instructions in the label of each garment. Turn them inside out and was per instructions.





Nurses-New Look Page



Your New Professional Look!

We are all wonderfully and uniquely different. Multiple style options were designed for the NHC program to insure that everyone will be able to select the styles that work best with your body shape. In your job, you need to select a size that allows you the most movement with your work motions. Loose fitting garments will work best. The only person who knows the size on the label is the partner ordering your uniform and you. When selecting your sizes, please allow for slight shrinkage.

Before You Wash Your Garments

PLEASE TRY ON YOUR UNIFORMS BEFORE WASHING THEM. If garments do not fit please refer to the Order Form or the Style Information Form for the Return Policy. To guarantee you get the most wear out of your uniforms remember to look at the care instructions in the label of each garment. Turn them inside out and wash per instructions.



Nurses-Women's Tops



NHC4303-WWGRP
Landau Women's White Banded V-Neck Tunic with Graphite Color-blocking. Two Deep Pockets for device. Name Badge Holder. Side Vents. 65% Poly/35% Cotton.



NHC4304-WWGRP
Landau Women's White Crossover Tunic with Graphite Color-blocking Side Panels. Two Deep Pockets for device. Name Badge Holder. 65% Poly/35% Cotton.



9550-WWAH
Urbane Women's White Sweetheart Neck Tunic. Four Pockets. 54% Rayon/44% Poly/2% Spandex.



8232-WWP
Landau Women's White V-Neck Snap Front Tunic. Four Pockets. 65% Poly/35% Cotton.



8059-WWY
Landau Women's White Rounded Hem Tunic. Three Pockets. 65% Poly/ 35% Cotton.

NHC5604-GY
Women's Graphite Long Sleeve Compression Shirt. Moisture Wicking, Anti-microbial. 100% Polyester.



8001-WWP
Landau Women's White Maternity Top. 65% Poly/35% Cotton.



Nurses-Women's Pants and Skirt



NHC8327-GRP
Landau Women's Graphite Classic Fit Relaxed Fit Pant. Two Slash Pockets, Straight Leg. 65% Poly/35% Cotton.



NHC8335-GRP
Landau Women's Graphite Cargo Pant. Drawstring Front, Back Elastic, Slight Flare Leg with Side Vents. Two Back Pockets, Four Side Pockets. 65% Poly/35% Cotton.



7602-GRP
Landau Unisex Graphite Reversible Pant with Drawstring. One Back Pocket. Straight Leg. Maternity Pant Option. 65% Poly/35% Cotton.



83221-GRAPH
Scrub Zone Women's Graphite Relaxed Fit Cargo Pant. Elastic Waist, Two Thigh Pockets, Straight Leg. 65% Poly/35% Cotton.



NHC2226-GRP
Landau Women's Graphite Elastic Waist A-Line Skirt. Two Slash Pockets 29.5" Long. 65% Poly/35% Cotton.



Nurses-Women's Jackets and Vest



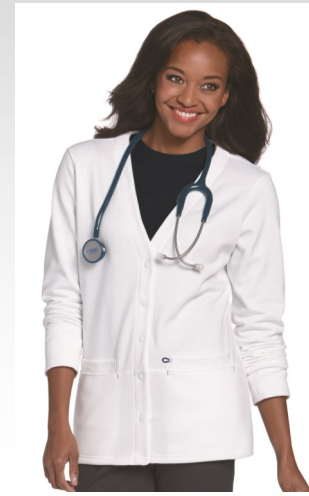
0755-WWY
Landau Women's White Vest. Four Pockets. 65% Poly/35% Cotton.



3027-WWCH
Landau Women's White Stretch Warm-Up Jacket with Side Vents. Three Pockets. 52% Cotton/45% Poly/3% Spandex.



3109-WWXY
Urbane Women's White Zip Front Lab Coat. Two Pockets. 65% Poly/ 35% Cotton.



3505-WHITE
Work Flow Women's White V-Neck Fleece Jacket. Four Pockets, Snap Front Closure. 65% Poly/ 35% Cotton.



7525-WWY
Landau Women's White Crew Neck Jacket. Four Pockets. Knit Cuffs. 65% Poly/35% Cotton.



7535- WWY
Landau Women's White V-Neck Cardigan. Knit Cuffs. Four Pockets. 65% Poly/35% Cotton.



75221-WHITE
Scrub Zone Women's White Warm-up Jacket. Two Pockets, Elastic Cuffs. 65% Poly/35% Cotton.



9607-WWXY
Urbane Women's White Button Front Lab Coat. Four Pockets. Stockinet Cuffs. 65% Poly/35% Cotton.



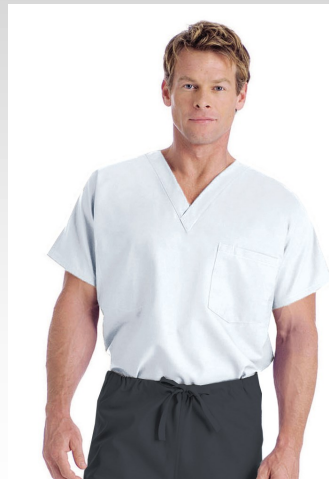
Nurses-Men's Shirts and Jackets



NHC7220-WH
Men's White Polo with Contrast Graphite Piping. Moisture Wicking, Anti-microbial. 100% Polyester.



NHCK540P-WH
Men's White Polo with Left Chest Pocket. Moisture Wicking, Anti-microbial. 100% Polyester.



7502-WWY
Landau Men's White Reversible V-neck Scrub Top. 65% Poly/35% Cotton.



7489-WWY
Landau Men's White Five Pocket V-neck Top. 65% Poly/35% Cotton.



NHC5104-GY
Landau Men's Graphite Long Sleeve Compression Shirt. Moisture Wicking, Anti-microbial. 100% Polyester.



3124-WWVC
Landau Men's White Four Button Lab Coat. Five Pockets. 65% Poly/35% Cotton.



3148-WWY
Landau Men's White Four Button Lab Coat with Back Sewn Belt. Three Pockets. 65% Poly/35% Cotton.



3174-WWXY
Landau Men's White Four Button Notebook Lab Coat with Back Sewn Belt. Five Pockets. 65% Poly/35% Cotton.

7551-WWXY
Landau Men's White Snap Front Jacket with Knit Collar and Cuffs. Four Pockets. 65% Poly/35% Cotton.





Nurses-Men's Pants



2026-GRRPS

Landau Men's Graphite Lightweight Stretch Ripstop Cargo Pant. Hidden Drawstring, Elastic Back, Snap Closure, Belt Loops, Zipper-fly, Angled Knee Darts, Two Hip Pockets, One Vertical Side-seam Thigh Pocket. Horizontal Thigh Pocket and Two Back Pockets. Straight Leg. Runs big, may need to order one size smaller than normal. 84% Cotton/13% Poly/3% Spandex.



7602-GRP

Landau Unisex Graphite Reversible Relaxed Fit Pant with Drawstring. One Back Pocket. Straight Leg. 65% Poly/35% Cotton.



8555-GRP

Landau Men's Graphite Elastic Waist Cargo Pant with Zipper Fly. Hidden Drawstring, Two Slash Pockets, Four Thigh Pockets, Two Back Pockets. Straight Leg. 65% Poly/35% Cotton.



85221-GRAPH

Scrub Zone Men's Graphite Drawstring Cargo Pant. One Thigh Pocket, One Back Pocket. 65% Poly/35% Cotton.



CNA-The New Look



Your New Professional Look!

We are all wonderfully and uniquely different. Multiple style options were designed for the NHC program to insure that everyone will be able to select the styles that work best with your body shape. In your job, you need to select a size that allows you the most movement with your work motions. Loose fitting garments will work best. Remember, these garments are not vanity sizing! The only person who knows the size on the label is the partner ordering your uniform and you. When selecting your sizes, please allow for slight shrinkage.

Before You Wash Your Garments

PLEASE TRY ON YOUR UNIFORMS BEFORE WASHING THEM. If garments do not fit, please refer to the Order Form or the Style Information Form for the Return Policy. To guarantee you get the most wear out of your uniforms remember to look at the care instructions in the label of each garment. Turn them inside out and wash per instructions.



CNA-The New Look



Your New Professional Look!

We are all wonderfully and uniquely different. Multiple style options were designed for the NHC program to insure that everyone will be able to select the styles that work best with your body shape. In your job, you need to select a size that allows you the most movement with your work motions. Loose fitting garments will work best. Remember, these garments are not vanity sizing! The only person who knows the size on the label is the partner ordering your uniform and you. When selecting your sizes, please allow for slight shrinkage.

Before You Wash Your Garments

PLEASE TRY ON YOUR UNIFORMS BEFORE WASHING THEM. If garments do not fit, please refer to the Order Form or the Style Information Form for the Return Policy. To guarantee you get the most wear out of your uniforms remember to look at the care instructions in the label of each garment. Turn them inside out and wash per instructions.



CNA-Women's Tops, Jackets and Vests



NHC4303-BEGRP
Landau Women's Royal Banded V-Neck Tunic with Graphite Color-blocking. Two Deep Pockets for Device. Name Badge Holder. 65% Poly/35% Cotton.



NHC4304-BEGRP
Landau Women's Royal Crossover Tunic with Graphite Color-blocking Side Panels. Two Deep Pockets for Device. Name Badge Holder. 65% Poly/35% Cotton.



9550-BEAH
Urbane Women's Royal Sweetheart Neck Tunic. Four Pockets. 54% Rayon/44% Poly/2% Spandex.



8232-BEP
Landau Women's Royal V-Neck Snap Front Tunic. Four Pockets. 65% Poly/35% Cotton.



NHC5604-GY
Women's Graphite Long Sleeve Compression Shirt. Moisture Wicking, Anti-microbial. 100% Polyester.



50001-ROYAL
Women's Royal Long Sleeve Crew Neck Tee. 95% Cotton/5% Spandex.



NHC8001-BEP
Landau Royal Maternity Top. 65% Poly/35% Cotton.



NHC0755-BEP
Landau Women's Royal Vest. Four Pockets. 65% Poly/35% Cotton.



7525-BEP
Landau Women's Royal Crew Neck Jacket. Four Pockets. Knit Cuffs. 65% Poly/35% Cotton.



7535-BEP
Landau Women's Royal V-neck Cardigan. Four Pockets. Knit Cuffs. 65% Poly/35% Cotton.



75221-ROYAL
Scrub Zone Women's Royal Warm-up Jacket. Elastic Cuffs, Two Pockets. 65% Poly/ 35% Cotton.



CNA-Women's Pants and Skirt



NHC8327-GRP
Landau Women's Graphite Classic Relaxed Fit Pant. Two Slash Pockets. Straight Leg. 65% Poly/35% Cotton.



NHC8335-GRP
Landau Women's Graphite Flare Leg Cargo Pant. Drawstring Front, Back Elastic, Slight Flare Leg with Deep Side Vents. Two Back Pockets, Four Side Pockets. 65% Poly/35% Cotton.



7602-GRP
Landau Unisex Graphite Reversible Pant with Drawstring. One Back Pocket. Straight Leg. Maternity Pant Option. 65% Poly/35% Cotton.



83221-GRAPH
Scrub Zone Women's Graphite Relaxed Fit Cargo Pant. Elastic Waist, Two Thigh Pockets. Straight Leg. 65% Poly/35% Cotton.



NHC2226-GRP
Landau Women's Graphite Elastic Waist A-Line Skirt. Two Slash Pockets. 29.5" Long. 65% Poly/35% Cotton.



CNA-Men's Shirts and Jacket



NHC7220-RO
Men's Royal Polo with Contrast Graphite Piping. Moisture Wicking, Anti-microbial.
100% Polyester.



4127-BERPS
Landau Men's Royal Stretch Ripstop V-neck Top with Chest Pocket.
84% Cotton/13% Poly/3% Spandex.



7502-BEP
Landau Men's Royal Reversible V-neck Scrub Top with Chest Pocket.
65% Poly/35% Cotton.



7489-BEP
Landau Men's Royal Five Pocket V-neck Top.
65% Poly/35% Cotton.



NHC5104-GY
Landau Men's Graphite Long Sleeve Compression Shirt. Moisture Wicking, Anti-microbial.
100% Polyester.



7551-BEP
Landau Men's Royal Snap Front Jacket with Knit Collar and Cuffs. Four Pockets.
65% Poly/35% Cotton.



CNA-Men's Pants



2026-GRRPS
Landau Men's Graphite Lightweight Stretch Ripstop Cargo Pant. Hidden Drawstring, Elastic Back, Snap Closure, Belt Loops, Zipper-fly, Angled Knee Darts, Two Hip Pockets, One Vertical Side-seam Thigh Pocket. Horizontal Thigh Pocket and Two Back Pockets. Straight Leg. Runs big, may need to order one size smaller than normal. 84% Cotton/13% Poly/3% Spandex.



7602-GRP
Landau Unisex Graphite Reversible Relaxed Fit Pant with Drawstring. One Back Pocket. Straight Leg. 65% Poly/35% Cotton.



8555-GRP
Landau Men's Graphite Elastic Waist Cargo Pant with Zipper Fly. Hidden Drawstring, Two Slash Pockets, Four Thigh Pockets, Two Back Pockets. Straight Leg. 65% Poly/35% Cotton.



85221-GRAPH
Scrub Zone Men's Graphite Drawstring Cargo Pant. One Thigh Pocket, One Back Pocket. 65% Poly/35% Cotton.



Maintenance -The New Look



Your New Professional Look!

We are all wonderfully and uniquely different. Multiple style options were designed for the NHC program to insure that everyone will be able to select the styles that work best with your body shape. In your job, you need to select a size that allows you the most movement with your work motions. Loose fitting garments will work best. Remember, these garments are not vanity sizing! The only person who knows the size on the label is the partner ordering your uniform and you. When selecting your sizes, please allow for slight shrinkage.

Before You Wash Your Garments

PLEASE TRY ON YOUR UNIFORMS BEFORE WASHING THEM. If garments do not fit please refer to the Order Form or the Style Information Form for the Return Policy. To guarantee you get the most wear out of your uniforms remember to look at the care instructions in the label of each garment. Turn them inside out and wash per instructions.



Maintenance -Shirts and Jackets



NHCK500P-LTG
Men's Light Grey Polo with
Left Chest Pocket.
65% Poly/35% Cotton.



NHC665-GY
Men's Heather Grey Color
Block Polo. Moisture Wicking
Properties. 100% Polyester.



iD1576-GY
Men's Grey Dry Mesh Polo.
Moisture Wicking Properties.
100% Polyester.



NHC5104-GY
Landau Men's Graphite Long
Sleeve Compression Shirt.
Moisture Wicking, Antimicro-
bial. 100% Polyester.



iD1230-TI
Men's Titanium Short Sleeve Poplin
Shirt with Left Chest Pocket.
65% Poly/35% Cotton.



iD1280-TI
Men's Titanium Long Sleeve Poplin
Shirt with Left Chest Pocket.
65% Poly/35% Cotton.



iDM990-BK
Men's Mid-weight Full
Zip Fleece. Two Front Zip
Pockets. 100% Polyester.



NHC1000-YL
Men's Yellow Taffeta
Jacket in a Pouch
100% Nylon.



Maintenance -Pants



NHC874-BK
Dickies Men's Black Flat Front Heavyweight Work Pant. Two Side Seam Pockets. Two Back Pockets. Belt Loops. Straight Leg. 65% Poly/35% Cotton.



iD85283-BK
Dickies Men's Black Loose Fit Heavyweight Double Knee Work Pant. Two Front Pockets. Two Back Pockets. One Back Thigh Pocket. Straight Leg. 65% Poly/35% Cotton.



NHC23214-BK
Dickies Men's Black Loose Fit Cargo Pant. Two Front Pockets, Two Back Pockets. Two Thigh Pockets with Flap Closure. Belt Loops. Straight Leg. 100% Cotton.



5016-BLKHT
iD by Landau Men's Black Flat Front Twill Pant. Two Front Pockets, Right Coin Pocket, Cell Phone Pocket, Two Utility Pockets, Two Back Pockets. Unhemmed 37". 65% Poly/35% Cotton.



iD4013-BKKT
iD by Landau Men's Black Flat Front Structured Twill Pant. Two Side Seam Pockets, Two Back Pockets. 65% Poly/35% Cotton.



2026-BKRPS
Landau Men's Black Lightweight Stretch Ripstop Cargo Pant. Hidden Drawstring, Elastic Back, Snap Closure, Belt Loops, Zipper-fly, Angled Knee Darts, Two Hip Pockets, One Vertical Side-seam Thigh Pocket. Horizontal Thigh Pocket and Two Back Pockets. Straight Leg. Runs big, may need to order one size smaller than normal. 84% Cotton/13% Poly/3% Spandex.



Housekeeping & Floor Care -The New Look



Before You Wash Your Garments

PLEASE TRY ON YOUR UNIFORMS BEFORE WASHING THEM. If garments do not fit please refer to the Order Form or the Style Information Form for the Return Policy. To guarantee you get the most wear out of your uniforms remember to look at the care instructions in the label of each garment. Turn them inside out and wash per instructions.

Your New Professional Look!

We are all wonderfully and uniquely different. Multiple style options were designed for the NHC program to insure that everyone will be able to select the styles that work best with your body shape. In your job, you need to select a size that allows you the most movement with your work motions. Loose fitting garments will work best. Remember, these garments are not vanity sizing! The only person who knows the size on the label is the partner ordering your uniform and you. When selecting your sizes, please allow for slight shrinkage.



Housekeeping & Floor Care - Tops and Jackets



NHC4311-GRPOP
Landau Women's Color-blocked Graphite/Papaya Crew Neck Tunic with V-Neck Opening. Two Deep Pockets. Name Badge Holder. Poly-cotton Blend.



NHC4312-OPGRP
Landau Women's Papaya Button Front Tunic with Graphite Color-blocking. Faux Back Belt. Four Front Pockets. Name Badge Holder. Cotton-poly Blend.



NHC5604-GY
Women's Graphite Long Sleeve Compression Shirt. Moisture Wicking, Anti-microbial. 100% Polyester.



75221-GRAPH
Scrub Zone Women's Graphite Warm-up Jacket. Elastic Cuffs, Two Pockets. 65% Poly/35% Cotton.



NHC1000-YL
Unisex Yellow Taffeta Hooded Jacket. Two Slash Pockets, Zipper Opening. Elastic Cuffs. 100% Nylon



NHC7204-CRL
Men's Coral Short Sleeve Polo. Classic Fit. 60% Cotton/40% Poly.



NHC5104-GY
Landau Men's Graphite Long Sleeve Compression Shirt. Moisture Wicking, Anti-microbial. 100% Polyester.



iDM990-BK
Men's Black Mid-weight Full Zip Fleece Jacket. Two Zip Front Pockets. 100% Polyester.





Housekeeping and Floor Care - Pants and Skirt



NHC8327-GRP
Landau Women's Graphite Classic Relaxed Fit Pant. Two Slash Pockets, Straight Leg. 65% Poly/35% Cotton.



NHC8335-GRP
Landau Women's Graphite Cargo Pant. Drawstring Front, Back Elastic, Slight Flare Leg with Side Vents. Two Slash Pockets, Four Thigh Pockets, Two Back Pockets. 65% Poly/35% Cotton.

83221-GRAPH
Scrub Zone Women's Graphite Relaxed Fit Cargo Pant. Elastic Waist, Two Thigh Pockets, Straight Leg. 65% Poly/35% Cotton.



NHC2226-GRP
Landau Women's Graphite Elastic Waist A-Line Skirt. Two Slash Pockets 29.5" Long. 65% Poly/35% Cotton.

7602-GRP
Landau Unisex Graphite Reversible Pant with Drawstring. One Back Pocket. Straight Leg. Maternity Pant Option. 65% Poly/35% Cotton.



2026-GRRPS
Landau Men's Graphite Lightweight Stretch Ripstop Cargo Pant. Hidden Drawstring, Elastic Back, Snap Closure, Belt Loops, Zipper-fly, Angled Knee Darts, Two Hip Pockets, One Vertical Side-seam Thigh Pocket. Horizontal Thigh Pocket and Two Back Pockets. Straight Leg. Runs big, may need to order one size smaller than normal. 84% Cotton/13% Poly/3% Spandex.



Rehab -The New Look



Your New Professional Look!



We are all wonderfully and uniquely different. Multiple style options were designed for the NHC program to insure that everyone will be able to select the styles that work best with your body shape. In your job, you need to select a size that allows you the most movement with your work motions. Loose fitting garments will work best. Remember, these garments are not vanity sizing! The only person who knows the size on the label is the partner ordering your uniform and you. When selecting your sizes, please allow for slight shrinkage.

Before You Wash Your Garments

PLEASE TRY ON YOUR UNIFORMS BEFORE WASHING THEM. If garments do not fit please refer to the Order Form or the Style Information Form for the Return Policy. To guarantee you get the most wear out of your uniforms remember to look at the care instructions in the label of each garment. Turn them inside out and wash per instructions.



Rehab -The New Look



Your New Professional Look!

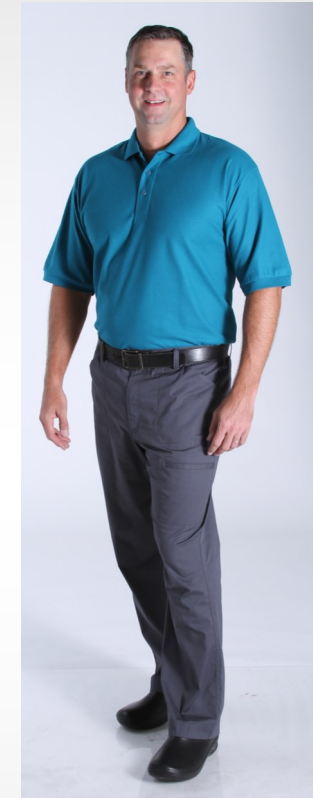
We are all wonderfully and uniquely different. Multiple style options were designed for the NHC program to insure that everyone will be able to select the styles that work best with your body shape. In your job, you need to select a size that allows you the most movement with your work motions. Loose fitting garments will work best. Remember, these garments are not vanity sizing! The only person who knows the size on the label is the partner ordering your uniform and you. When selecting your sizes, please allow for slight shrinkage.

Before You Wash Your Garments

PLEASE TRY ON YOUR UNIFORMS BEFORE WASHING THEM. If garments do not fit please refer to the Order Form or the Style Information Form for the Return Policy. To guarantee you get the most wear out of your uniforms remember to look at the care instructions in the label of each garment. Turn them inside out and wash per instructions.



Rehab -The New Look



Your New Professional Look!

We are all wonderfully and uniquely different. Multiple style options were designed for the NHC program to insure that everyone will be able to select the styles that work best with your body shape. In your job, you need to select a size that allows you the most movement with your work motions. Loose fitting garments will work best. Remember, these garments are not vanity sizing! The only person who knows the size on the label is the partner ordering your uniform and you. When selecting your sizes, please allow for slight shrinkage.

Before You Wash Your Garments

PLEASE TRY ON YOUR UNIFORMS BEFORE WASHING THEM.
If garments do not fit please refer to the Order Form or the Style Information Form for the Return Policy. To guarantee you get the most wear out of your uniforms remember to look at the care instructions in the label of each garment. Turn them inside out and wash per instructions.



Rehab -Women's Tunic Tops



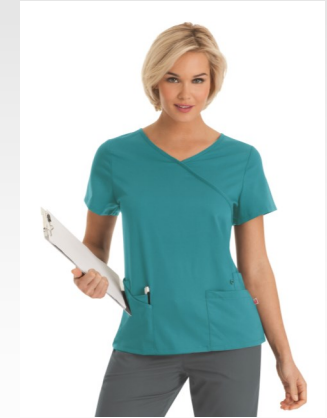
NHC4307-GSTL
Landau Women's Graphite
V-neck Tunic with Teal and Steel
Colorblocking. Three Pockets, Side
Vents. 54% Rayon/44% Poly/
2% Spandex.



9038-GRAH
Urbane Women's Graphite
Mock Wrap Tunic. Six Pockets.
Side Vents. 54% Rayon/
44% Poly/2% Spandex.



9550— GRAH
Urbane Women's Graphite
Sweetheart Neckline Tunic.
Four Pockets.
54% Rayon/44% Poly/
2% Spandex.



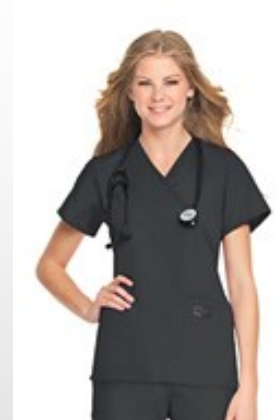
9577-BTAH
Urbane Women's Teal
Crossover Tunic. Six
Pockets.
54% Rayon/44% Poly/
2% Spandex.



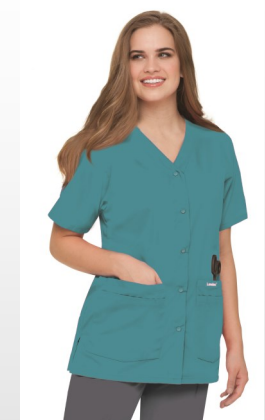
70221-TEAL
Scrub Zone Women's Teal
V-Neck Tunic. Three Deep
Pockets. Side Vents.
65% Poly/35% Cotton.



70221-GRAPH
Scrub Zone Women's Graphite
V-Neck Tunic. Three Deep
Pockets. Side Vents.
65% Poly/35% Cotton.



70224-GRAPH
Scrub Zone Women's Graphite
Faux Wrap Tunic. Two Deep
Pockets. Side Vents.
65% Poly/35% Cotton.



8232-BTP
Landau Women's Teal V-
Neck Snap Front Tunic.
Two Deep Double Pockets.
65% Poly/35% Cotton.



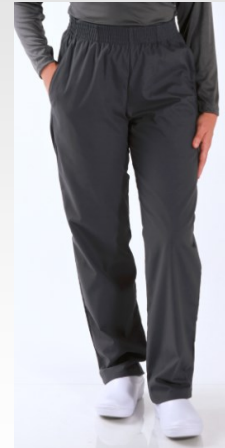
Rehab -Women's Pants



9300-GRAH
Urbane Women's Graphite Flat Front Cargo Pant. Drawstring Front. Back Elastic. Slight Flare Leg. Two Scoop Pockets. Side Thigh Pocket. 54% Rayon/44% Poly/ 2% Spandex.



9306-GRAH
Urbane Women's Graphite Elastic Waist Pant. Hidden Drawstring Front. Slight Flare Leg with Vents. Two Curved Pockets. 54% Rayon/ 44% Poly/ 2% Spandex.



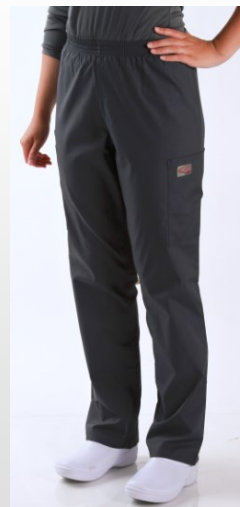
NHC8327-GRP
Landau Women's Graphite Classic Relaxed Fit Pant with 2" Elastic Waist Band. Two Slash Pockets, Straight Leg. 65% Poly/35% Cotton.



NHC8335-GRP
Landau Women's Graphite Cargo Pant. Drawstring Front, Back Elastic, Slight Flare Leg with Side Vents. Two Deep Slash Pockets. Four Thigh Pockets. 65% Poly/35% Cotton.



7602-GRP
Landau Unisex Graphite Reversible Pant with Drawstring. One Back Pocket. Straight Leg. 65% Poly/35% Cotton.



83221-GRAPH
Scrub Zone Women's Graphite Relaxed Fit Cargo Pant. Elastic Waist, Two Thigh Pockets, Straight Leg. 65% Poly/35% Cotton.



NHC2226-GRP
Landau Women's Graphite Elastic Waist A-Line Skirt. Two Slash Pockets 29.5" Long. 65% Poly/35% Cotton.



Rehab -Women's Knit Shirts, Jackets and Sweater



iD7056-GY
Women's Smoke Heather Long
Sleeve Open Front Cardigan.
52% Cotton/31% Acrylic/
17% Nylon. **Special Order Item:**
Non-Returnable



iDL500-TEAL
Women's Teal Short Sleeve
Polo. 5.0 oz.
65% Poly/35% Cotton.
Special Order Item:
Non-Returnable



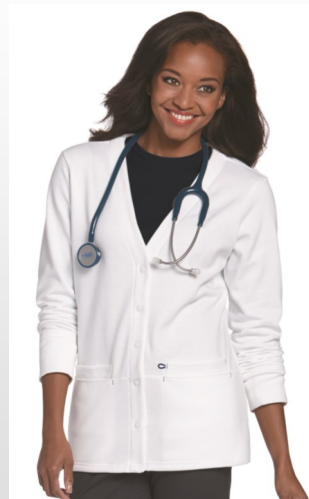
NHC5604-GY
Women's Graphite Long
Sleeve Compression Shirt.
Moisture Wicking, Anti-
microbial. 100% Polyester.



3027-WWCH
Landau Women's White
Stretch Warm-Up Jacket with
Side Vents. Three Pockets.
52% Cotton/45% Poly/
3% Spandex.



3109-WWXY
Urbane Women's White
Zip Front Lab Coat.
Two Pockets.
65% Poly/ 35% Cotton.



3505-WHITE
Work Flow Women's
White V-Neck Fleece
Jacket. Four Pockets,
Snap Front Closure.
65% Poly/ 35% Cotton.



9607-WWXY
Urbane Women's
White Button Front Lab
Coat. Four Pockets.
Stockinet Cuffs.
65% Poly/35% Cotton.



Rehab -Men's Shirts



4127-GRRPS

Landau Men's Graphite Stretch Ripstop V-Neck Scrub Top. Left Chest Pocket. Side Vents. 82% Cotton/13% Poly/3% Spandex Ripstop.



iDK500-TEAL

Men's Teal Short Sleeve Polo. Three Button Placket. Side Vents. 5.0 oz. 65% Poly/35% Cotton.



NHC5104-GY

Landau Men's Graphite Long Sleeve Compression Shirt. Moisture Wicking, Anti-microbial. 100% Polyester.



3124-WWVC

Landau Men's White Four Button Lab Coat. Three Front Pockets. Two Inside Pockets. Sewn Down Back Belt. 65% Poly/35% Cotton.



Rehab -Men's Pants



2026-GRRPS

Landau Men's Graphite Lightweight Stretch Ripstop Cargo Pant. Hidden Drawstring, Elastic Back, Snap Closure, Belt Loops, Zipper-fly, Angled Knee Darts, Two Hip Pockets, One Vertical Side-seam Thigh Pocket. Horizontal Thigh Pocket and Two Back Pockets. Straight Leg. Runs big, may need to order one size smaller than normal. 84% Cotton/13% Poly/3% Spandex.



7602-GRP

Landau Unisex Graphite Reversible Relaxed Fit Pant with Drawstring. One Back Pocket. Straight Leg. 65% Poly/35% Cotton.



8555-GRP

Landau Men's Graphite Elastic Waist Cargo Pant with Zipper Fly. Hidden Drawstring, Two Slash Pockets, Four Thigh Pockets, Two Back Pockets. Straight Leg. 65% Poly/35% Cotton.



85221-GRAPH

Scrub Zone Men's Graphite Drawstring Cargo Pant. One Thigh Pocket, One Back Pocket. 65% Poly/35% Cotton.

